

Customer :

customer

Customer part :

customer part

Comment :

Comment

S1=0.72

S2=12.14

Tmax=441

Tp S2=480.0

PI=0.06

HI=240

Sample =9107

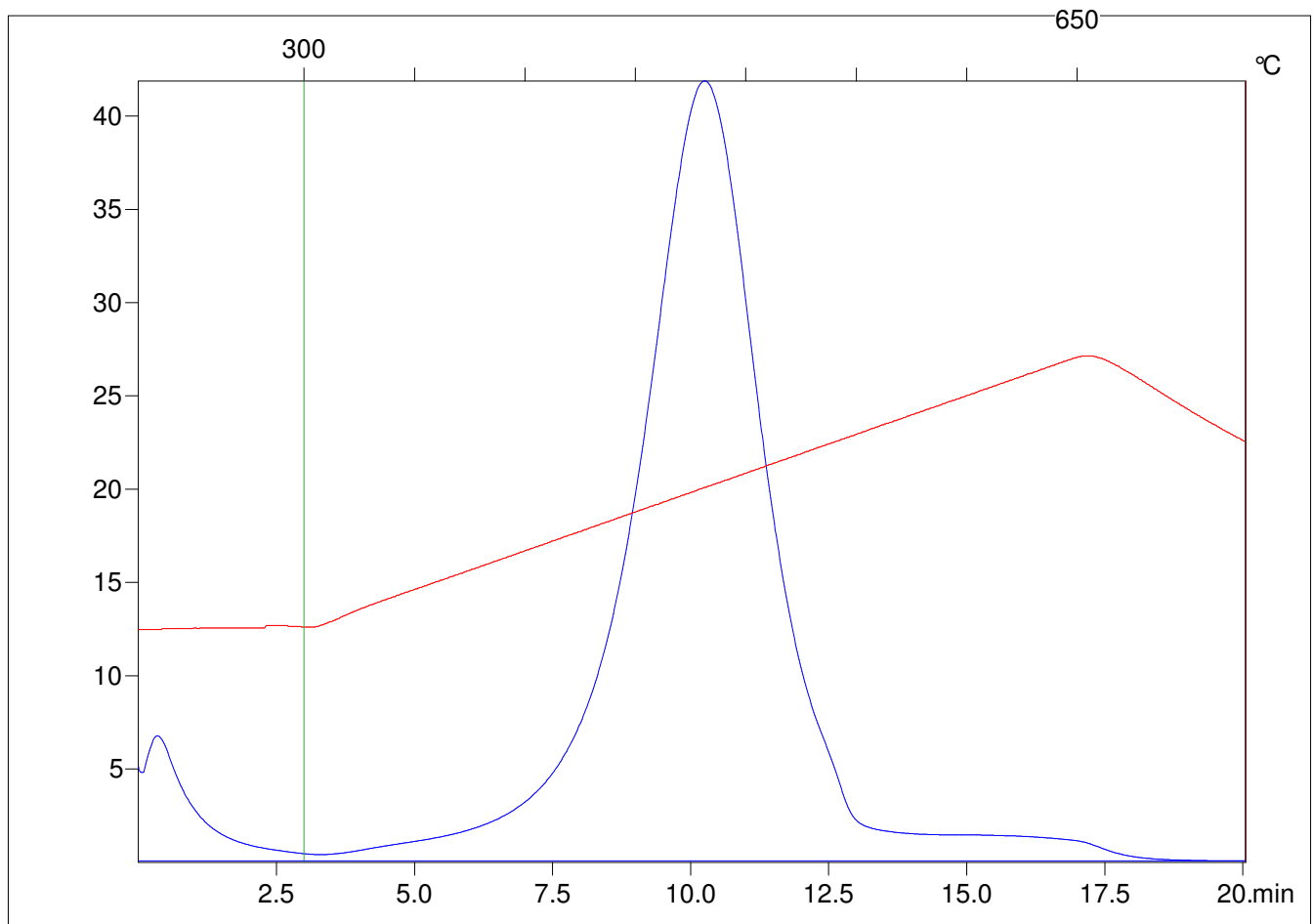
Method =Bulk Rock

Cycle=Basic

KFID(10*9)=1167

Qty =70.5

TOC=5.05



C:\VINC\PK141015\PK063.R00 : FID pyrolysis graphic

State

Pyro Status

Oxi Status